



EVANGELINA

* Evangelina Notes

- * The Evangelina Tuning commemorates the work done by Evangelina Villegas and Surinder K. Vasal with quality Protein Maize in Mexico Africa, India, Japan & China
- 1. Japanese melody "Sakura"

(5-12-5) 22-Tone Tubulog, "Evangelina" Tuning

©2001 by Ervin M. Wilson, all rights reserved

$$\begin{array}{r} 22 \\ 0 \end{array} \quad \begin{array}{r} 528 \\ -12 \end{array}$$

$$\begin{array}{r} 23 \\ +5 \\ 12 \end{array} \quad \begin{array}{r} 506 \end{array}$$

$$\begin{array}{r} 20. \\ +10 \\ 495 \end{array} \quad \begin{array}{r} 0015 \\ -19 \\ 484 \end{array} \quad \begin{array}{r} 615 \end{array}$$

$$\begin{array}{r} 18. \\ -2 \\ 462 \end{array} \quad \begin{array}{r} 47 \end{array}$$

$$\begin{array}{r} 17. \\ +3 \\ 445.5 \end{array} \quad \begin{array}{r} 27 \\ 16 \end{array}$$

$$\begin{array}{r} 16. \\ +8 \\ 440 \end{array} \quad \begin{array}{r} 315 \\ 915 \\ 429 \end{array} \quad \begin{array}{r} 0015 \end{array}$$

$$\begin{array}{r} 14. \\ -4 \\ 417.66 \\ (418) \end{array} \quad \begin{array}{r} 405 \\ 256 \\ (19) \\ (2) \end{array}$$

$$\begin{array}{r} 13. \\ - \\ 396 \end{array} \quad \begin{array}{r} 213 \end{array}$$

$$\begin{array}{r} 12. \\ +6 \\ 374 \end{array} \quad \begin{array}{r} 17 \\ 12 \end{array}$$

$$\begin{array}{r} 11. \\ \leftarrow + \\ 371.25 \end{array} \quad \begin{array}{r} 3215 \\ 610 \\ 363 \end{array} \quad \begin{array}{r} 0015 \end{array}$$

$$\begin{array}{r} 9. \\ -1 \\ 352 \end{array} \quad \begin{array}{r} 314 \end{array}$$

$$\begin{array}{r} 8. \\ +4 \\ 334.12 \end{array} \quad \begin{array}{r} 601 \\ 4 \end{array}$$

$$\begin{array}{r} 7. \\ +9 \\ 330 \end{array} \quad \begin{array}{r} 415 \\ 606 \\ 322.67 \end{array} \quad \begin{array}{r} 0015 \end{array}$$

$$\begin{array}{r} 5. \\ -3 \\ 308 \end{array} \quad \begin{array}{r} 617 \end{array}$$

$$\begin{array}{r} 4. \\ +2 \\ 297 \end{array} \quad \begin{array}{r} 0010 \end{array}$$

$$\begin{array}{r} 3. \\ +7 \\ 293.33 \end{array} \quad \begin{array}{r} 910 \\ 286 \end{array} \quad \begin{array}{r} 13 \\ 12 \end{array}$$

$$\begin{array}{r} 1. \\ -5 \\ 278.44 \end{array} \quad \begin{array}{r} 135 \\ 128 \end{array}$$

$$\begin{array}{r} 0 \\ 22 \\ 0 \end{array} \quad \begin{array}{r} 264 \\ -1 \end{array} \quad \begin{array}{r} \text{IMARD1.EW} \end{array}$$

Ref: Some Basic Patterns Underlying Genus 12 & 17, E. Wilson 1980

(5-12-5) 22-Tone Tubulung, "Evangelina" Tuning

©2001 by Ervin M. Wilson, all rights reserved

| | | |
|----|----|----|
| 2 | 1 | 16 |
| 22 | 0. | 24 |

| | | |
|-----|--------|----|
| 243 | 501.19 | 23 |
| 128 | 21. | +5 |

| | | | |
|----|----|-----|-----|
| 6 | 15 | 22 | 484 |
| 19 | 15 | 19. | 495 |
| 0 | 15 | 15 | 20. |

| | | |
|---|-----|----|
| 7 | 14 | 21 |
| 4 | 18. | -2 |

| | | |
|----|-------|-----|
| 27 | 445.5 | 17. |
| 16 | +3 | 18. |

| | | | |
|---|----|-----|-----|
| 8 | 13 | 15. | 429 |
| 0 | 13 | 15 | 440 |
| 0 | 13 | 15 | 440 |
| 0 | 13 | 15 | 20 |

| | | |
|-----|--------|----|
| 405 | 417.66 | 19 |
| 256 | (418) | -4 |

| | | |
|---|-----|----|
| 3 | 396 | 18 |
| 2 | 13. | -1 |

| | | |
|----|-----|-----|
| 17 | 374 | 17 |
| 12 | +6 | 12. |

| | | | |
|-----|--------|-----|-----|
| 11. | 371.25 | 11 | 363 |
| 11. | 10. | 10. | 11 |
| 11. | 10. | 10. | 11 |

| | | |
|---|-----|----|
| 4 | 352 | 16 |
| 3 | -1 | 24 |

| | | |
|----|--------|----|
| 81 | 334.12 | 23 |
| 64 | +4 | 8. |

| | | | |
|--------|---|----|-----|
| 9 | 4 | 10 | 330 |
| 22 | 4 | 10 | 330 |
| 6. | 4 | 10 | 15 |
| 322.67 | 3 | 7. | +9 |

| | | |
|---|-----|----|
| 6 | 308 | 14 |
| 7 | -3 | 21 |

| | | |
|---|-----|----|
| 8 | 297 | 9 |
| 9 | +2 | 4. |

| | | | |
|----|--------|----|-----|
| 13 | 293.33 | 13 | 286 |
| 12 | 293.33 | 13 | 286 |
| 12 | 293.33 | 13 | 286 |
| 12 | 293.33 | 13 | 20 |

| | | |
|-----|--------|----|
| 135 | 278.44 | 19 |
| 128 | -5 | 1. |

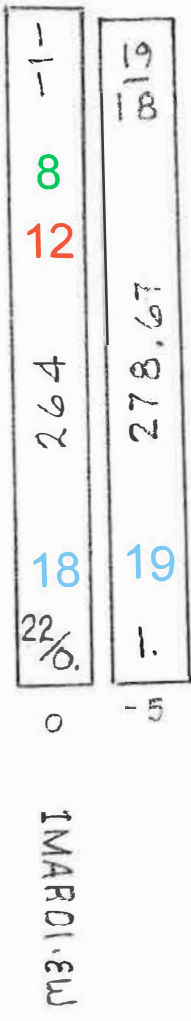
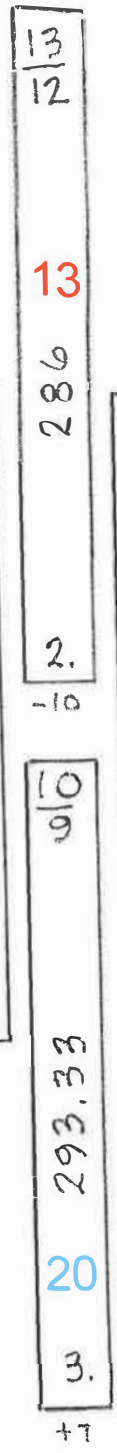
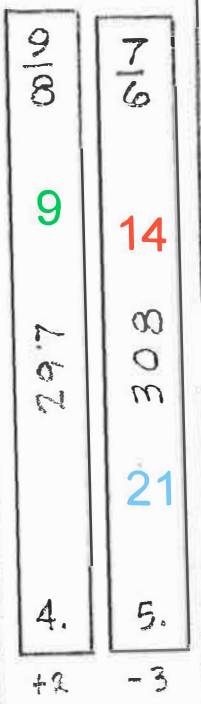
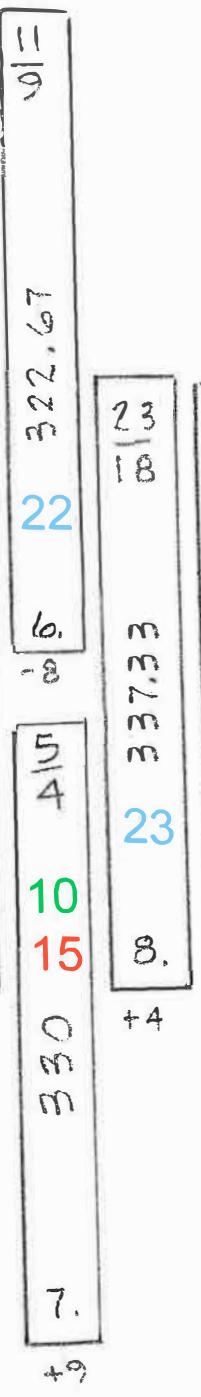
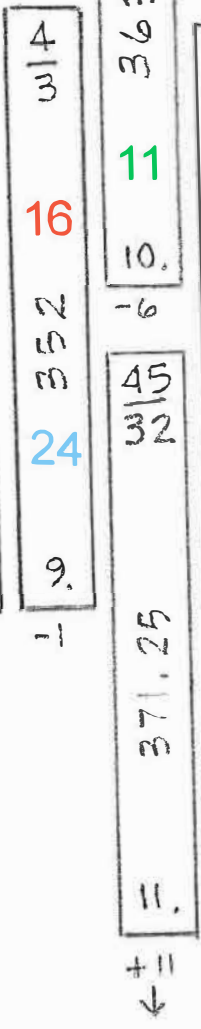
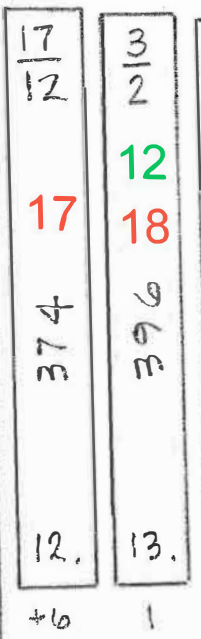
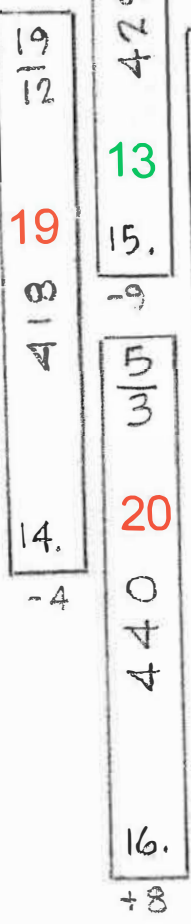
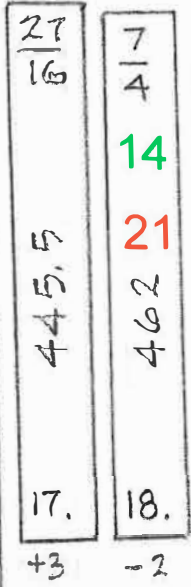
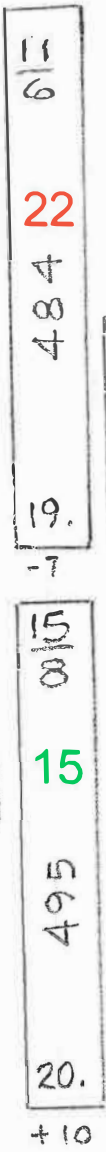
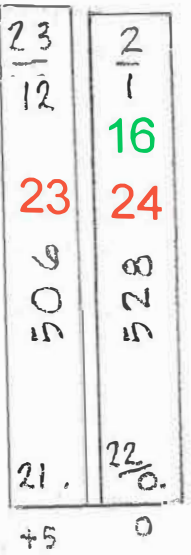
| | | | |
|----|-----|----|-----------|
| 18 | 264 | 12 | IMARD1.8U |
| 8 | 0 | 22 | 0. |
| 8 | 0 | 22 | 0. |

Ref; Some Basic Patterns Underlying Genus 12 & 17, E. Wilson 1980

colors added by k.grady 2/2014

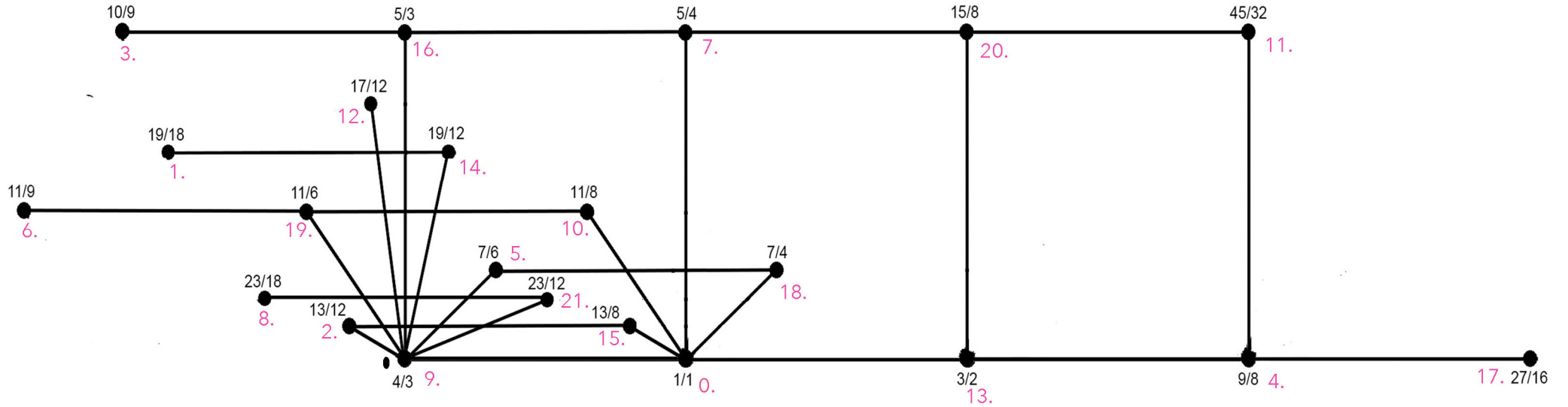
(5-12-5) 22-Tone Tubular, "Evangelina" Tuning

© 2001 by Ervin M. Wilson, all rights reserved

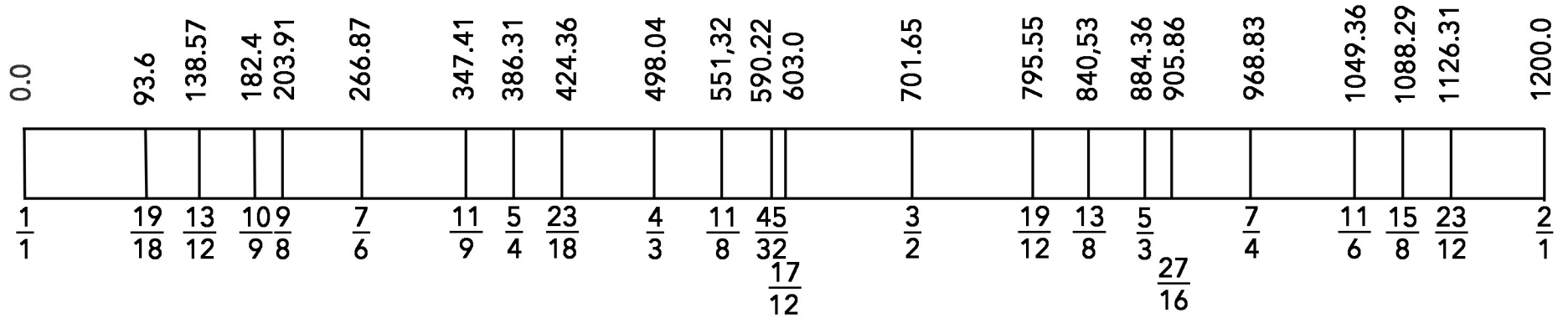


Ref: Some Basic Patterns Underlying Genus 12 & 17, E. Wilson 1980

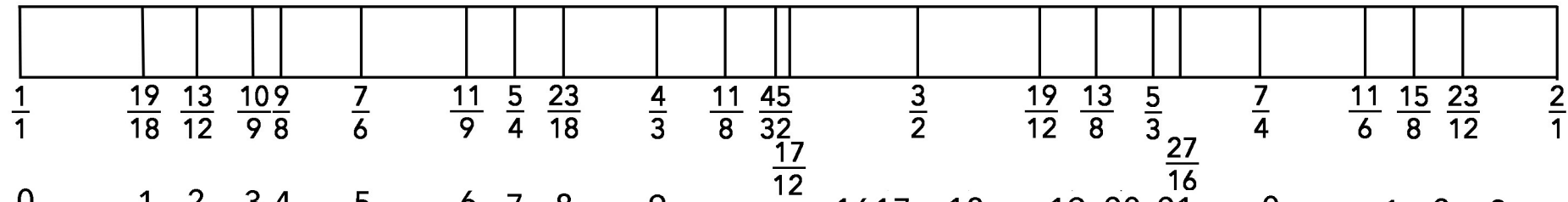
EVANGELINA- 22TONE SCALE



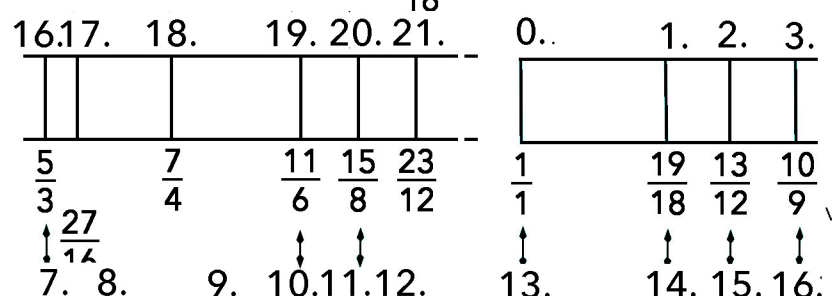
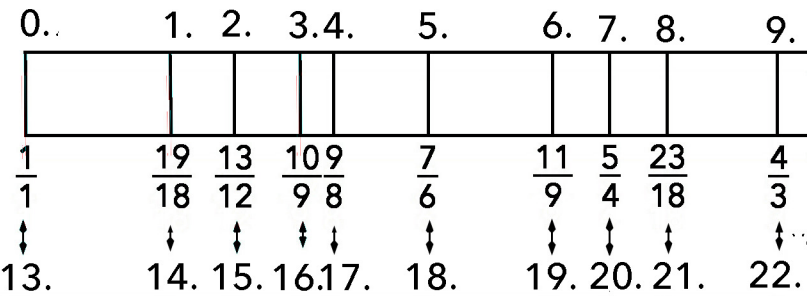
BY ERV WILSON



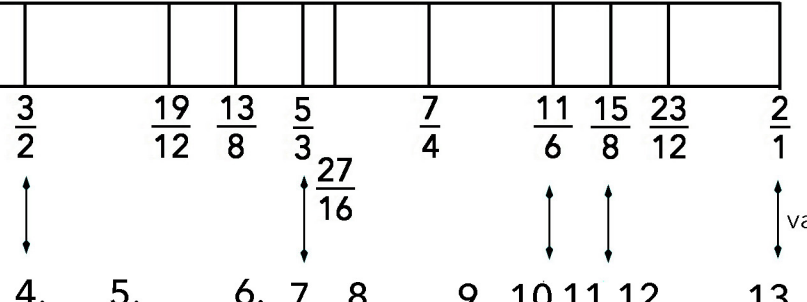
0.0 93.6 138.57 182.4 203.91 266.87 347.41 386.31 424.36 498.04 551.32 590.22 603.0 701.65 795.55 840.53 884.36 905.86 968.83 1049.36 1088.29 1126.31 1200.0



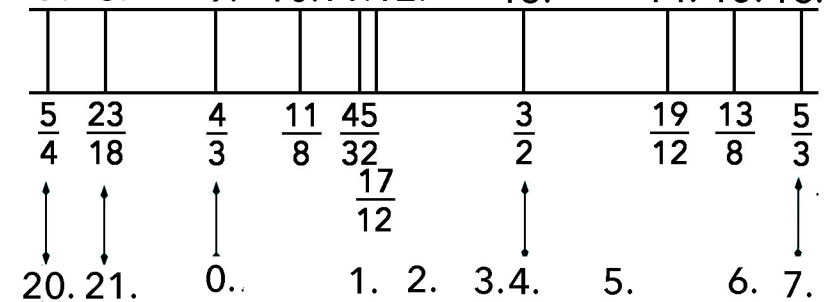
75 TOTAL



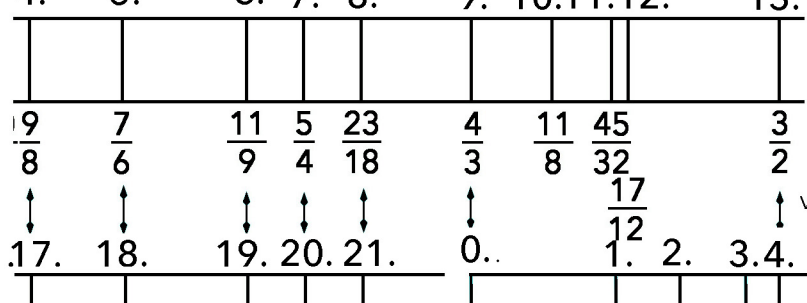
6 possible tonics



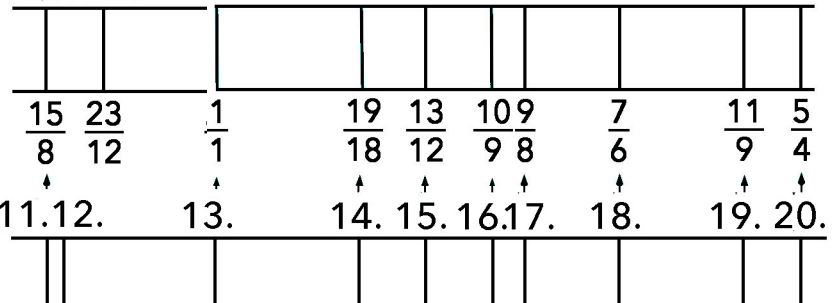
8 variables = 28 scales



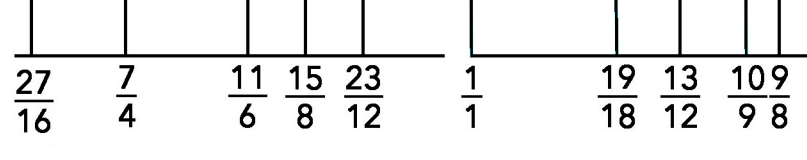
5 variables = 10 scales



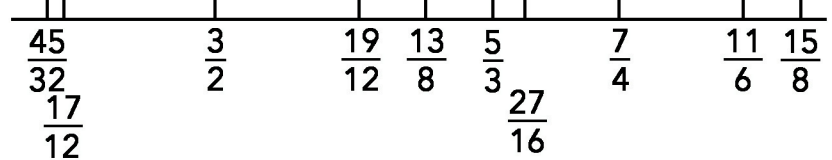
3 variables = 3 scales



3 variables = 3 scales



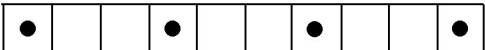
5 variables = 10 scales



7 variables = 21 scales

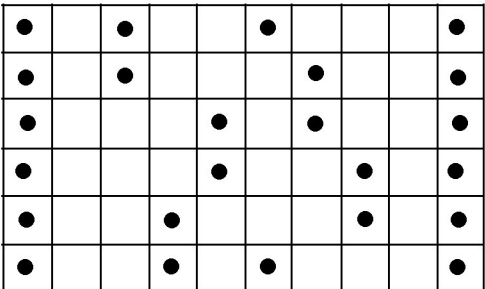
EVANGELINA- REPEATED TETRACHORD POSSIBILITIES

0. 1. 2. 3. 4. 5. 6. 7. 8. 9.



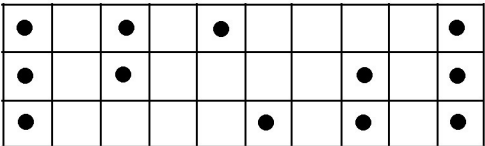
13. 14.15.16.17.18.19. 20. 21. 0.

0. 1. 2. 3. 4. 5. 6. 7. 8. 9.



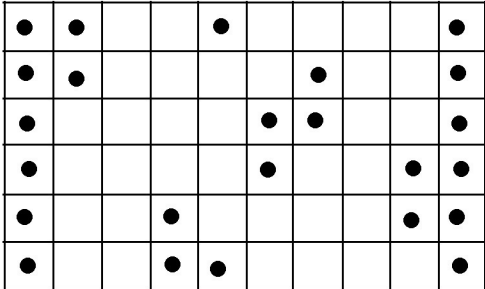
13. 14.15.16.17.18.19. 20. 21. 0.

0. 1. 2. 3. 4. 5. 6. 7. 8. 9.



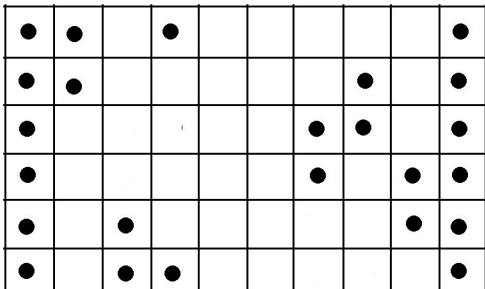
13. 14.15.16.17.18.19. 20. 21. 0.

0. 1. 2. 3. 4. 5. 6. 7. 8. 9.



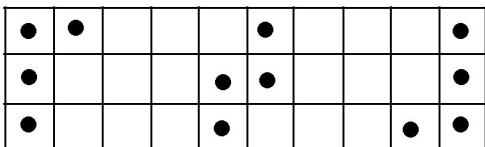
13. 14.15.16.17.18.19. 20. 21. 0.

0. 1. 2. 3. 4. 5. 6. 7. 8. 9.



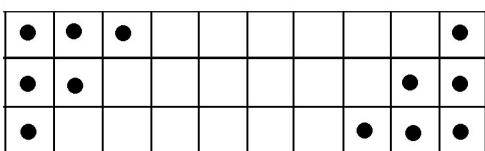
13. 14.15.16.17.18.19. 20. 21. 0.

0. 1. 2. 3. 4. 5. 6. 7. 8. 9.



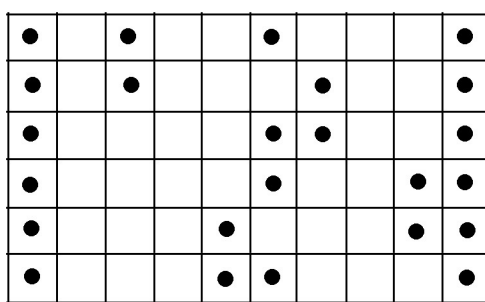
13. 14.15.16.17.18.19. 20. 21. 0.

0. 1. 2. 3. 4. 5. 6. 7. 8. 9.



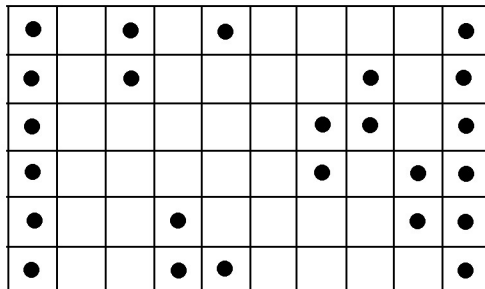
13. 14.15.16.17.18.19. 20. 21. 0.

20. 0. 1. 2. 3. 4. 5. 6. 7.



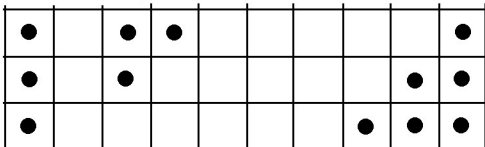
11. 13. 14.15.16.17.18.19. 20.

20. 0. 1. 2. 3. 4. 5. 6. 7.



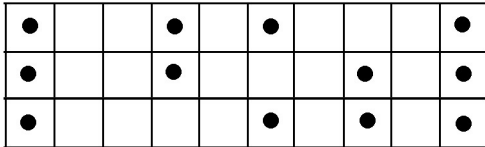
11. 13. 14.15.16.17.18.19. 20.

20. 0. 1. 2. 3. 4. 5. 6. 7.



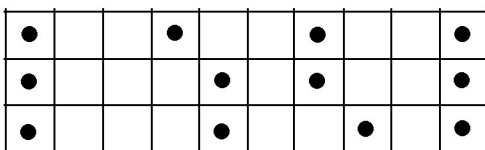
11. 13. 14.15.16.17.18.19. 20.

20. 0. 1. 2. 3. 4. 5. 6. 7.



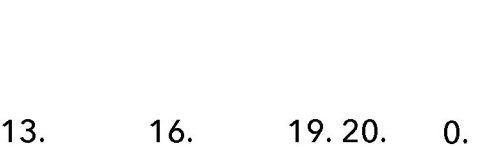
11. 13. 14.15.16.17.18.19. 20.

20. 0. 1. 2. 3. 4. 5. 6. 7.

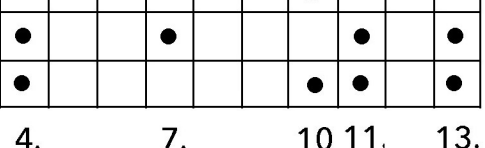


11. 13. 14.15.16.17.18.19. 20.

20. 0. 1. 2. 3. 4. 5. 6. 7.

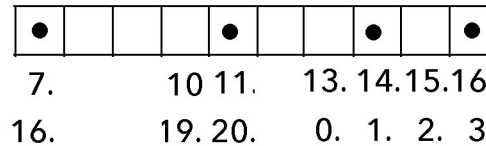


13. 16. 19. 20. 0.



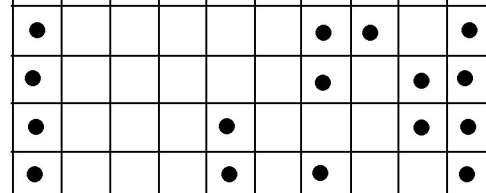
4. 7. 10 11. 13.

16. 19. 20. 0. 1. 2. 3.



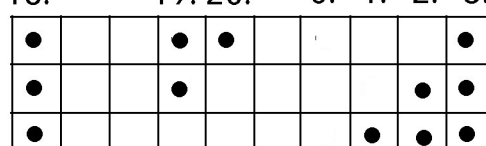
7. 10 11. 13. 14.15.16.

16. 19. 20. 0. 1. 2. 3.



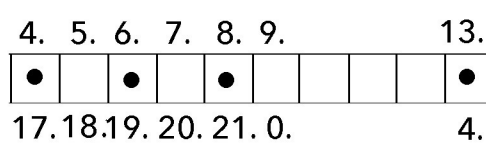
7. 10 11. 13. 14.15.16.

16. 19. 20. 0. 1. 2. 3.

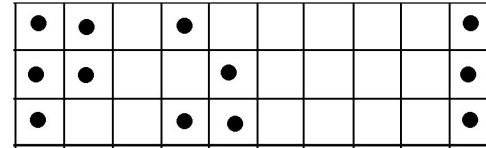


7. 10 11. 13. 14.15.16.

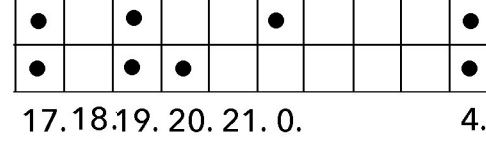
16. 19. 20. 0. 1. 2. 3.



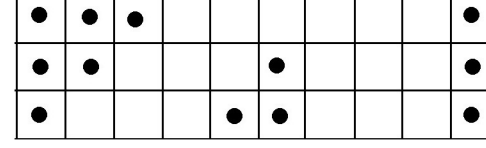
4. 5. 6. 7. 8. 9. 13.



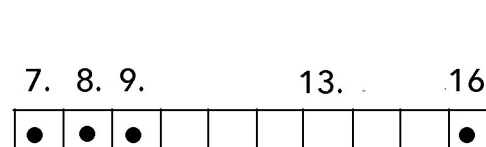
17.18.19. 20. 21. 0. 4.



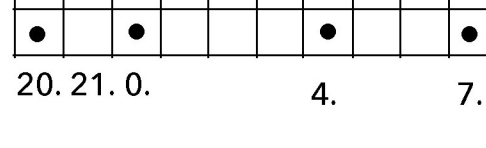
4. 5. 6. 7. 8. 9. 13.



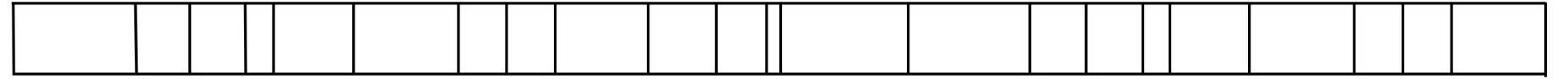
17.18.19. 20. 21. 0. 4.



7. 8. 9. 13. 16.



20. 21. 0. 4. 7.



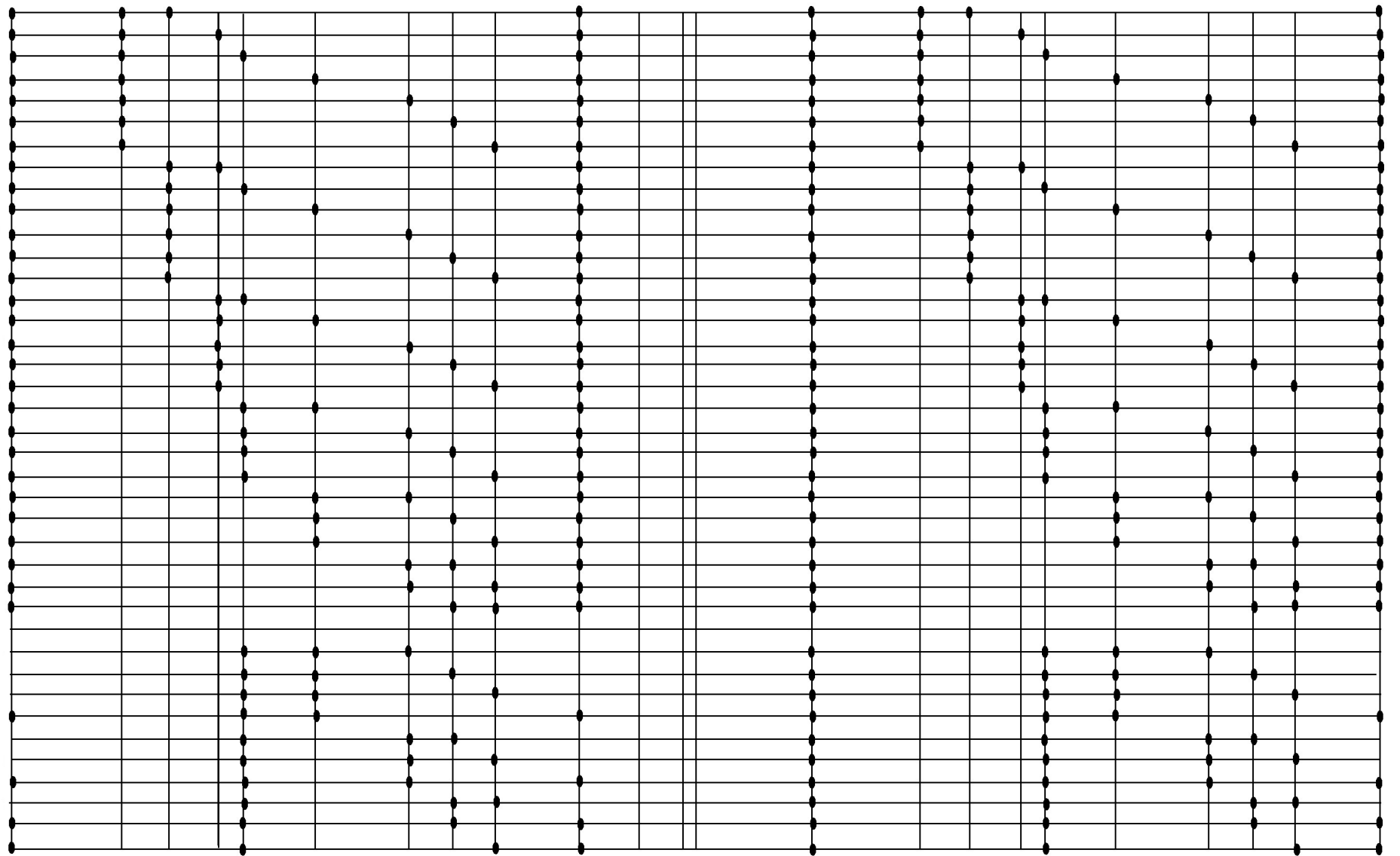
$\frac{1}{1}$ $\frac{19}{18}$ $\frac{13}{12}$ $\frac{109}{9}$ $\frac{7}{6}$ $\frac{11}{9}$ $\frac{5}{4}$ $\frac{23}{18}$ $\frac{4}{3}$ $\frac{11}{8}$ $\frac{45}{32}$ $\frac{3}{2}$ $\frac{19}{12}$ $\frac{13}{8}$ $\frac{5}{3}$ $\frac{7}{4}$ $\frac{11}{6}$ $\frac{15}{8}$ $\frac{23}{12}$ $\frac{2}{1}$

$\frac{17}{12}$ $\frac{27}{16}$

19/18 - 39/38-16/13-
19/18- 20/19- 99/95-
19/18- 81/76- 8/7-
19/18- 22/19- 12/11-
19/18- 20/19- 99/95-
19/18- 45/38- 16./15-
19/18- 23/19- 24/23-
13/12- 40/39- 6/5-
13/12- 27.26- 32/27-
13/12- 14/13- 8/7-
13/12- 44/39- 12/11-
13/12- 15/13- 16/15-
13/12- 46/39- 24/23-
10/9- 81/80- 32/27-
10/9- 21/20- 8/7-
10/9- 11/10- 12/11-
10/9- 9/8 16/15-
10/9- 23/20- 24/23-
98- 28/27- 8/7-
9/8- 11/10- 12/11-
9/8- 10/9- 16/15-
9/8- 92/81- 24/23-
7/6- 22/21- 12/11-
7/6- 15/14- 16/15-
7/6- 23/21- 24/23-
11/9- 23/21- 24/23-
11/9- 45/44- 24/23-
5/4- 23/21- 24/23-

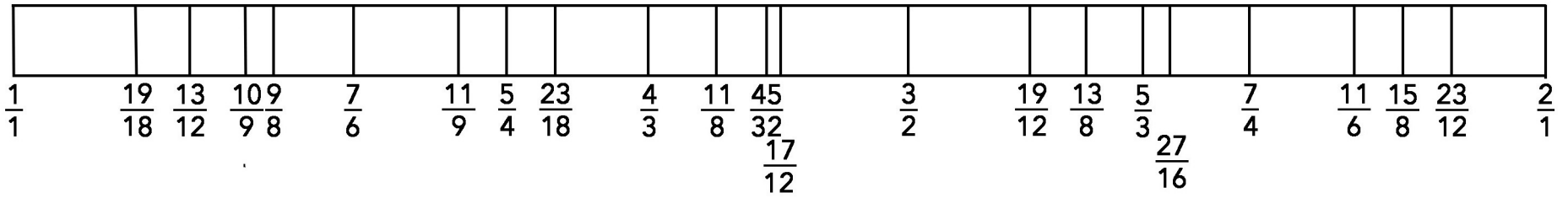
28/27- 22/21- 27/22-
28/27- 15/14- 6/5-
28/27- 23/21- 27/23-
28/27- 8/7- 9/8-

88/81- 24/23- 9/8-
88/81- 23/22- 27/23-
88/81- 12/11- 9/8-
10/9- 46/45- 27/23-
10/9- 16/15- 9/8-
92/81- 24/25- 9/8-



$\frac{1}{1}$ $\frac{19}{18}$ $\frac{13}{12}$ $\frac{109}{9}$ $\frac{7}{6}$ $\frac{11}{9}$ $\frac{5}{4}$ $\frac{23}{18}$ $\frac{4}{3}$ $\frac{11}{8}$ $\frac{45}{32}$ $\frac{3}{2}$ $\frac{19}{12}$ $\frac{13}{8}$ $\frac{5}{3}$ $\frac{7}{4}$ $\frac{11}{6}$ $\frac{15}{8}$ $\frac{23}{12}$ $\frac{2}{1}$

$\frac{17}{12}$ $\frac{27}{16}$

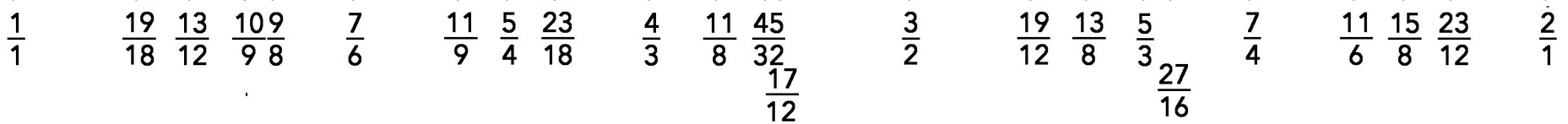


16/15- 19/18- 45/38
 16/15- 13/12- 15/13
16/15- 10/9- 9/8
16/15- 9/8- 10/9
16/15- 7/6- 15/14
 16/15- 11/9- 45/44
 152/135- 39/38- 15/13
 152/135- 20/19- 9/8
 152/135- 81/76- 10/9
 152/135- 21/19- 15/14
 152/135- 22/19- 45/44
 52/45- 49/39- 6/5
 52/45- 18/13- 10/9
 52/45- 14/13- 15/14
 52/45- 44/39- 45/44
 32/27- 81/80- 10/9
 32/27- 21/20- 45/44
 32/27- 11/10- 45/44
 2/27- 14/13- 15/14
 6/5- 88/81- 45/44
 6/5- 56/45- 45/44

 11/10- 45/44- 32/27
11/10- 12/11- 10/9
 11/10- 38/33- 20/19
 11/10- 13/11- 40/39
9/8- 16/15- 10/9
 9/8- 152/135- 20/19
 9/8- 52/45- 40/39
6/5- 19/18- 20/19
6/5- 13/12- 40/39
 95/64- 39/38- 40/39

46/45- 24/23- 5/4
 46/45- 27/23- 10/9
16/15- 9/8- 10/9

10/9- 11/10- 12/11
10/9- 9/8- 16/15
 11/9- 45/44- 16/15



Preliminary versions with notes.

SAVE

| | | | | | | | | | | | | | |
|---|----|---|---|---|---|----|---|----|---|----|---|----|----|
| 2 | 17 | 9 | 7 | 5 | 8 | 23 | 3 | 13 | 7 | 11 | 4 | 13 | 19 |
| 1 | 9 | 5 | 4 | 3 | 5 | 15 | 2 | 9 | 5 | 8 | 3 | 10 | 15 |
| 1 | 8 | 4 | 3 | 2 | 3 | 8 | 1 | 4 | 2 | 3 | 1 | 3 | 4 |

(5-12-5) 22-Tone Tubulung, "Erangelina" Tuning

©2001 by Erwin M. Wilson, all rights reserved

| | |
|-----|----|
| 2 | - |
| 528 | - |
| 22 | 0. |

| | |
|-----|--------|
| 243 | 21. |
| 128 | 501.19 |
| +5 | |

| | | |
|-----|-----|-----|
| 6 | 495 | 20. |
| 484 | | +10 |
| 19. | | |

| | | |
|---|-----|----|
| 7 | 462 | -2 |
| 4 | | |

| | | |
|----|-------|----|
| 27 | 445.5 | +3 |
| 16 | | |

| | | |
|-----|-----|----|
| 8 | 440 | +8 |
| 13 | | |
| 429 | | |
| 15. | | |

| | | |
|------|--------|----|
| 405 | 417.66 | -4 |
| 256 | (418) | |
| = | (19) | |
| (12) | | |

| | | |
|-----|-----|----|
| 3 | 374 | +6 |
| 2 | | |
| 396 | | |

| | | |
|-----|--------|-----|
| 17 | 371.25 | +11 |
| 12 | | |
| 374 | | |

| | | |
|-----|-----|----|
| 8 | 330 | +9 |
| 10. | | |
| 363 | | |
| 10. | | |

| | | |
|-----|--------|----|
| 4 | 334.12 | +4 |
| 3 | | |
| 352 | | |

| | | |
|--------|-----|----|
| 8 | 308 | -3 |
| 64 | | |
| 334.12 | | |

| | | |
|--------|-----|----|
| 6 | 297 | +2 |
| 308 | | |
| 322.67 | | |
| 330 | | |

| | | |
|-----|--------|----|
| 1 | 278.44 | -5 |
| 6 | | |
| 308 | | |

| | | |
|-----|-----|---|
| 4 | 264 | 0 |
| 0 | | |
| 297 | | |

| | | |
|-----|--------|----|
| 13 | 293.33 | +7 |
| 12 | | |
| 286 | | |
| 2. | | |

| | | |
|-----|--------|----|
| 1 | 278.44 | -5 |
| 135 | | |
| 128 | | |

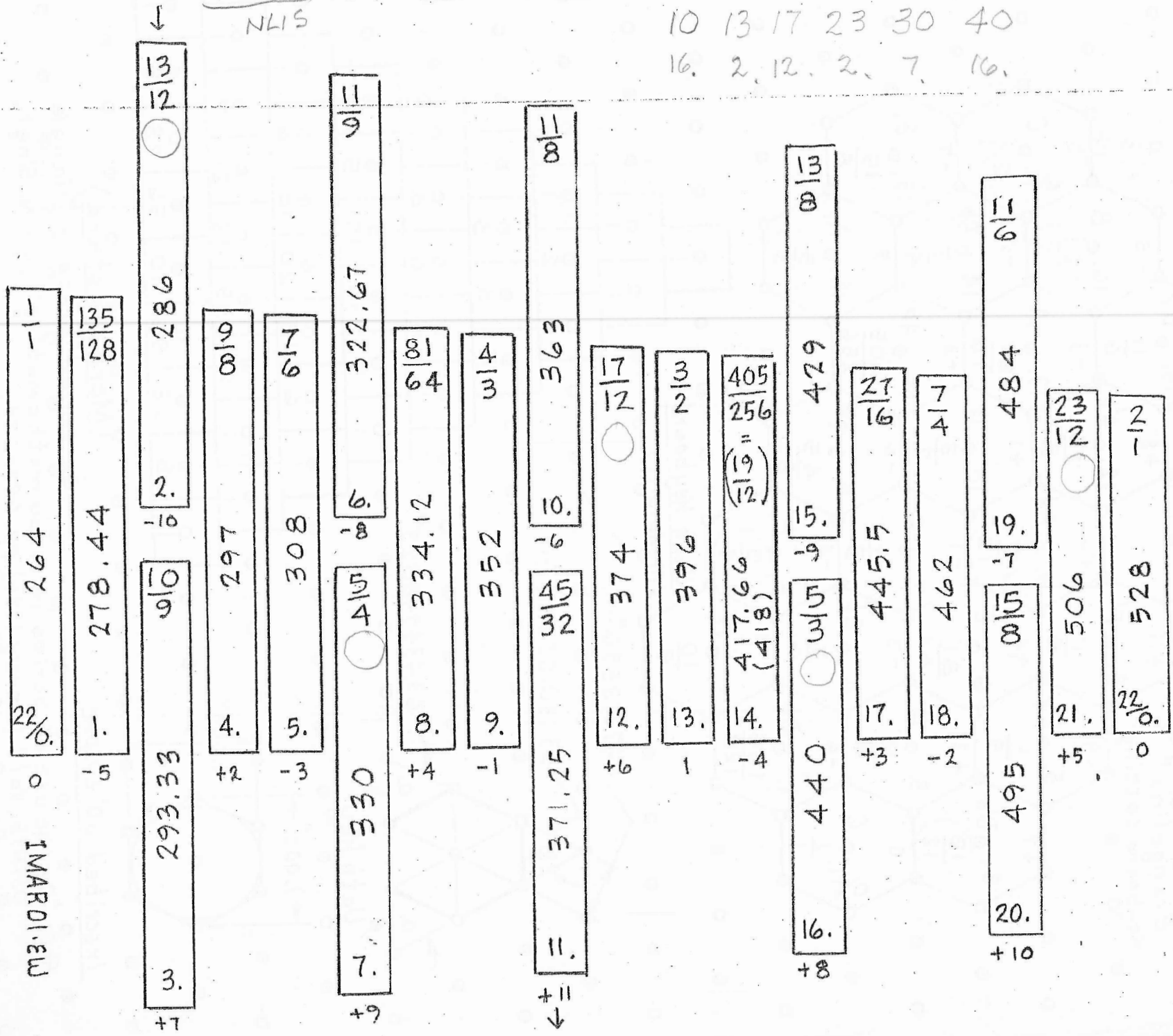
| | | |
|-----------|-----|---|
| 0 | 264 | 0 |
| -1 | | |
| 264 | | |
| IMAR01.6W | | |

Ref: Some Basic Patterns Underlying Genus 12 & 17, E. Wilson 1980

Stendro on "Lucas" Triangle (From F)
 NLIS 352

10 13 17 23 30 40
 16. 2. 12. 2. 7. 16.

Ref: Some Basic Patterns Underlying Genus 12 & 17, E. Wilson 1980



(5-12-5) 22-Tone Tubulong, "Evangellina" Tuning
 ©2001 by Ervin M. Wilson, all rights reserved

(5-12-5) 22-Tone Tubulog, "Exangelina" Tuning

©2001 by Ervin M. Wilson, all rights reserved

13/8

21 11 13 14 15 17 19 21
12

23/12
506.00

2 1
24
22/0

243/128
23
21

20. +10
495
8/5
19.
484
8/8
6/5

18. -2
462
7/4
21/16

17. +3
445.5
27/16

16. +8
440
3/5
9
429
8/13

14. -4
417.66
19/16
19
405/256
19/12

13. 1
396
3/2

12. +6
374
17/16
17

11. +11
371.25
32/45
6
10
363
8/11

9. -1
352
4/3
16

8. +4
334.12
23/12
23
81/64

7. +9
330
8/5
4/5
8
6
322.67
9/11

5. -3
308
7/4
21

4. +2
297
8/9

3. +7
293.33
9/10
2
286
13/12
13/8
13

1. -5
278.44
19/18
19

0
264
18
22/0
1-1
3/2
1-1
135/128

Ref; Some Basic Patterns Underlying Genus 12 & 17, E. Wilson 1980

2. Variations on the 22-Tone Scale, on Wilsons

Generalized Keyboard (Patent No 3,342,094)

©2002, by Ervin M. Wilson, work in progress, all rights reserved.

enter
↓

| | | | | | | |
|--|------------------------|---------------------|-----------------------|---------------------|---------------------|------------------------|
| | -10 $\frac{16}{15}$ | -8 $\frac{6}{5}$ | -6 $\frac{27}{20}$ | -4 $\frac{8}{5}$ | -2 $\frac{9}{5}$ | -10 $\frac{16}{15}$ |
| | 2. | 6. | 10. | 15. | 19. | 2. |
| | $\frac{256}{243}$ | $\frac{32}{27}$ | $\frac{27}{20}$ | $\frac{128}{81}$ | $\frac{9}{5}$ | $\frac{256}{243}$ |
| | 1. | -1 | -1 | 14. | -2 | 1. |
| | 0 | 5. | 4/3 | +1 | $\frac{16}{9}$ | 0 |
| | $\frac{1}{1}$ | +2 | 9. | $\frac{3}{2}$ | 18. | $\frac{1}{1}$ |
| | $\frac{264}{0/22}$ | 9/8 | +4 | $\frac{27}{16}$ | +3 | $\frac{528}{22/0}$ |
| | +5 | 4. | $\frac{81}{64}$ | 13. | +5 | +5 |
| | $\frac{243}{128}$ | +7 | $\frac{729}{512}$ | +6 | 17. | $\frac{243}{128}$ |
| | 21. | $\frac{10}{9}$ | 8. | +7 | -8 | 21. |
| | +10 | 3. | +9 | $\frac{5}{4}$ | $\frac{5}{3}$ | +10 |
| | $\frac{15}{8}$ | 7. | 12. | +11 | 16. | $\frac{15}{8}$ |
| | 20 | | $\frac{45}{32}$ | 11. | 20. | |

28 Mar 02. EW

↓
exit

enter
↓

| | | | | | | |
|--|------------------------|----------------------|----------------------|----------------------|----------------------|------------------------|
| | -10 $\frac{13}{12}$ | -8 $\frac{11}{9}$ | -6 $\frac{11}{8}$ | -4 $\frac{13}{8}$ | -2 $\frac{11}{6}$ | -10 $\frac{13}{12}$ |
| | 2. | 6. | 10. | 15. | 19. | 2. |
| | $\frac{19}{18}$ | $\frac{7}{6}$ | $\frac{11}{8}$ | $\frac{19}{12}$ | $\frac{9}{5}$ | $\frac{19}{18}$ |
| | 1. | -1 | -1 | 14. | -2 | 1. |
| | 0 | 5. | $\frac{4}{3}$ | +1 | $\frac{7}{4}$ | 0 |
| | $\frac{1}{1}$ | +2 | 9. | $\frac{3}{2}$ | 18. | $\frac{1}{1}$ |
| | $\frac{0}{22}$ | $\frac{9}{8}$ | +4 | $\frac{81}{64}$ | +3 | $\frac{27}{16}$ |
| | +5 | 4. | $\frac{81}{64}$ | 13. | +5 | +5 |
| | $\frac{23}{12}$ | +7 | $\frac{17}{12}$ | +6 | 17. | $\frac{23}{12}$ |
| | +10 | $\frac{10}{9}$ | 8. | +7 | +8 | 21. |
| | $\frac{15}{8}$ | 3. | +9 | $\frac{5}{4}$ | $\frac{5}{3}$ | +10 |
| | 20 | | 12. | +11 | 16. | $\frac{15}{8}$ |
| | | | $\frac{45}{32}$ | 11. | 20. | |

28 Mar 02. EW

↓
exit